

TECHNICAL SPECIFICATION

Downlights fixtures for CFL - GL214E



Technical data

- Nominal voltage: 230V / 50-60Hz
- Lamp power: max.2X20W
- Lampholder designation: E27
- Type of light source (not included commercial kit): 2pcs Compact fluorescent lamps with socket E27, max.20W
- Body material: Sheet steel with aluminium ring
- Diffuser: Glass with matt round
- Reflector: Aluminium mirror
- Type of Installation : Surface mounting for indoor use
- Body color: white, satin nickel
- Dust and humidity protection level: IP20
- Protection against electric shock: I
- Protection against ignition and fire: Class F

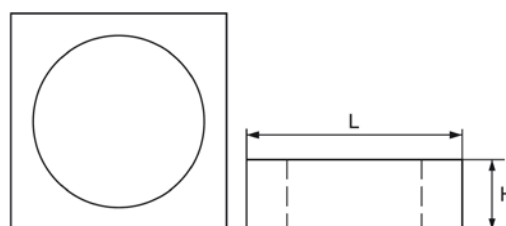
Areas of application

- Modern Residential Buildings
- Commercial buildings
- Offices
- Hotels
- Recreation facilities

Product benefits

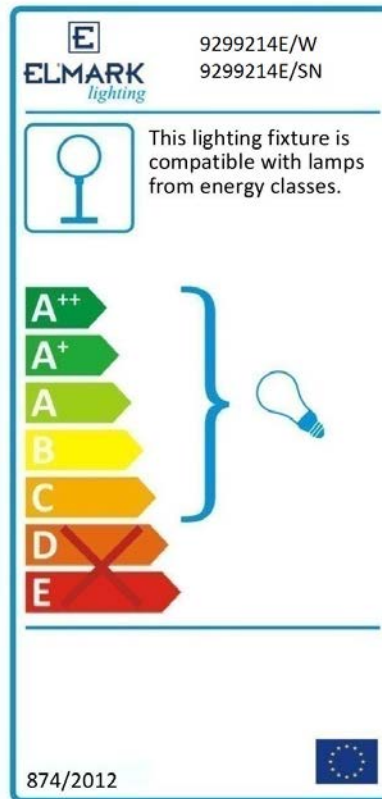
- Lightweight body
- Simple appearance
- Easy installation

Variants and dimensions



Model	Size (mm)		Colour body	Catalogue number	Packing (pcs)
	Diameter	Height			
GL 214E	240	60	white	9299214E/W	10
GL 214E	240	60	satin nickel	9299214E/SN	10

Energy efficiency



Barcodes

Barcode	Catalogue number
3800131180278	9299214E/W
3800131170569	9299214E/SN

Standards

EN 60598-1

EN 60598-2-1

